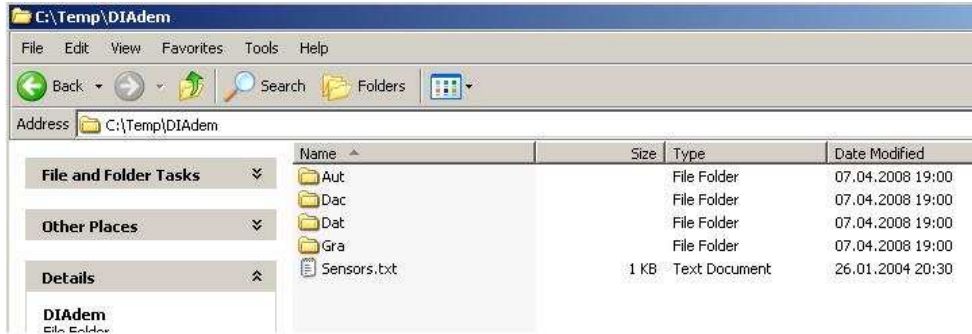
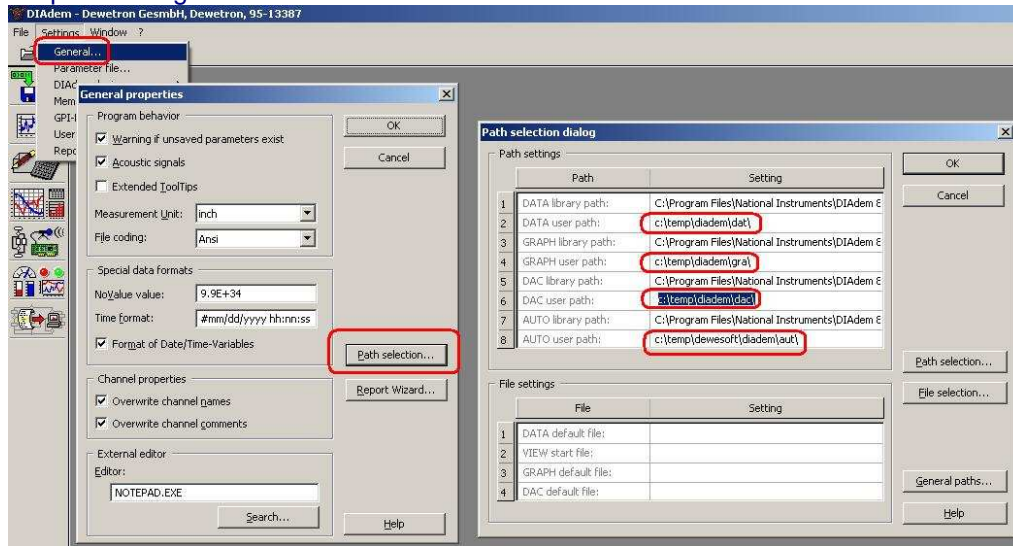


Diadem interface to Dewesoft

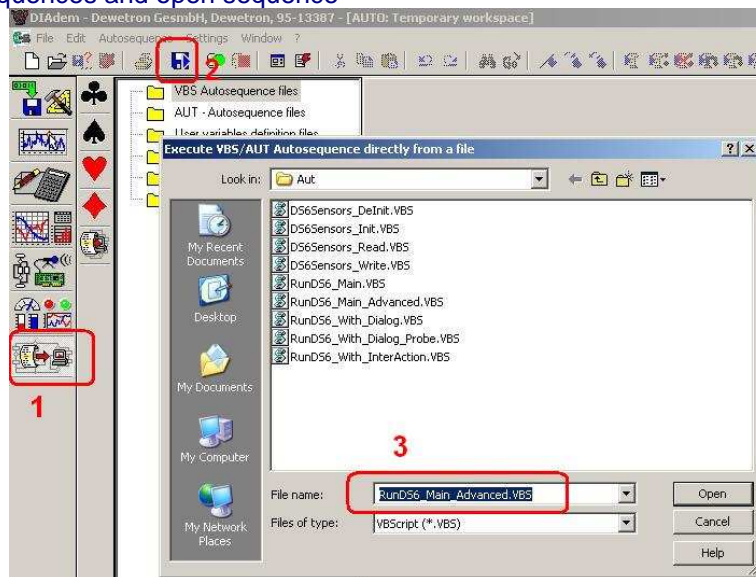
Extract the zip to e.g. c:\temp:
Step1: extract



Step2: make path settings in DIAdem



Step3: goto AutoSequences and open sequence



Step4: what is what

- DS6Sensors_xxx are old and obsolete
- RunDS6_Main / Main_Advanced / With_Dialog are pretty much the same from the view of DEWESoft, it uses the ActiveX container in a DIAdem-dialog. Only the stuff around in the script itself are a little different.
- RunDS6_With_Dialog_Probe uses also the ActiveX container in a DIAdem-dialog, but it holds only the full DEWESoft
- RunDS6_With_InterAction uses DEWESoft directly without container as "StayOnTop". Here to end this the so called "InterAction" needs to be closed. Please see next picture.

